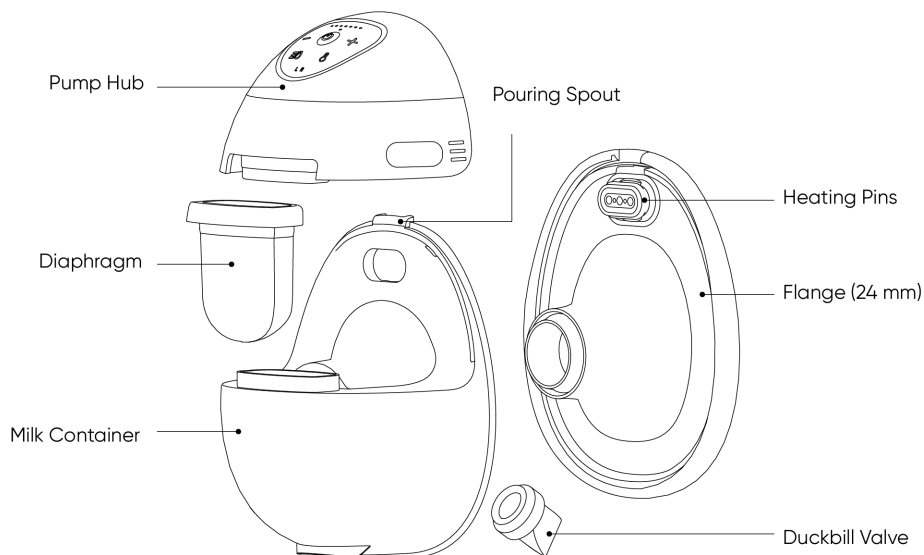
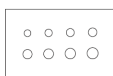


Breast Pump Overview



Accessories also include:



Charging Cables x2 Nipple Measurement Card

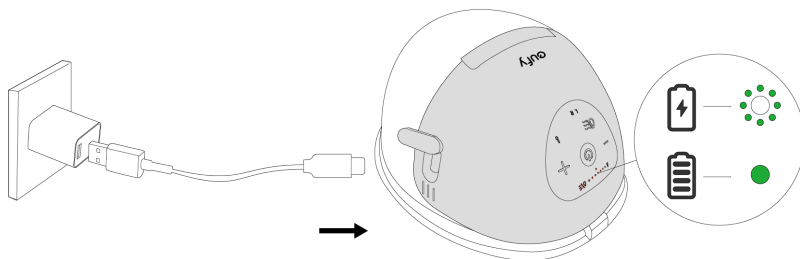
Charging

Use a USB-C charging cable (included) and a 5V/1A or higher adapter (not included) to charge your breast pumps.



Why will my pump hub not boot up?

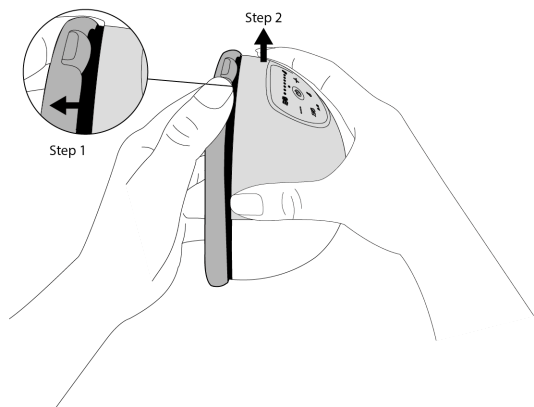
If you encounter a pump hub that does not work, press and hold the power button on the pump hub for 12 seconds to reset and see if it turns on.



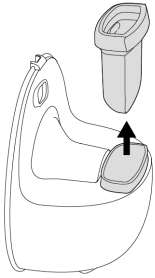
Disassembling

1. **Step 1:** Hold the pump hub with one hand and use the thumb of the other hand to pull the container edge near the spout outward to release the pump hub from the spout. (Avoid pulling the flange.)

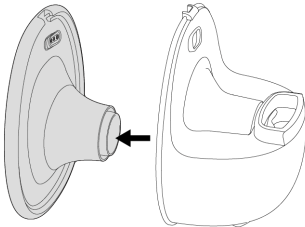
Step 2: Lift the hub.



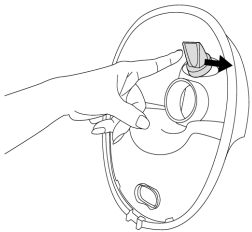
2. Remove the diaphragm from the groove.



3. Unwrap the outer ring of the flange, pull the heating pins out of the oval notch, and then pull the entire flange out.



4. Flick the duckbill valve with your finger to remove it.



Cleaning and Sterilizing

- **Before Initial Use:** Sterilize all washable parts by boiling for up to 5 minutes, stirring constantly to prevent the parts from sticking to the container and melting. Alternatively, steam-sterilize for a maximum of 5 minutes.
- **Daily Cleaning:** Rinse all washable parts with warm, soapy water, then air dry. Sterilize if needed, using the same methods as the initial cleaning.
- **Lifespan of washable parts:** The estimated life of the washable parts is 1-3 months, and actual life will vary with use and sterilization frequency. Replace them if you notice a decrease in suction and performance (particularly the duckbill valve), or if you have stored them too long when planning to pump for your next child.

Do not use a microwave to sterilize.



All washable parts (except pump hub) can be sterilized as

- **Always keep the pump hub dry and clean after each pumping session. If milk is spilled on the pump hub, wipe it clean with a dry cloth to ensure proper charging.**

Dishwasher



Cooking Pot

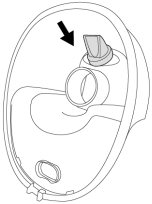


Baby Bottle Sterilizer

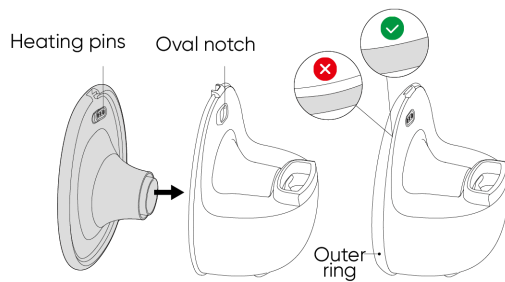


Assembling

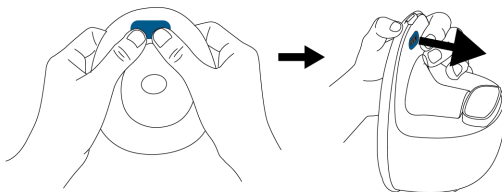
1. Hold the bottom of the container up, insert the duckbill valve into the small hole inside the container with your thumb and index finger and flick it to ensure it does not fall out.



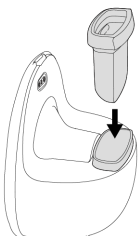
2. Push the flange onto the container, making sure the heating pins are firmly pushed into the oval notch. Wrap the outer ring to ensure it is properly sealed to prevent milk leakage.



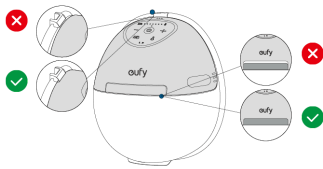
3. Press firmly behind the heating pins for full extension. Heating may fail if not fully extended.



4. Insert the diaphragm into the groove of the container, with the concave side of the diaphragm facing the flange side.

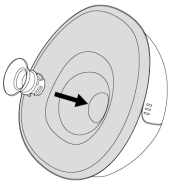


5. Insert the diaphragm into the groove of the container, with the concave side of the diaphragm facing the flange side.



✦ The locking mechanism between the pump hub and the pouring spout ensures reliable suction and heating.

6. To ensure a proper fit, use the Nipple Measurement Card to select an appropriate sizing insert and place the sizing insert in the flange tunnel.



✦ Sizing inserts are sold separately at <https://www.eufy.com/collections/breast-pump-accessories>

Wearing



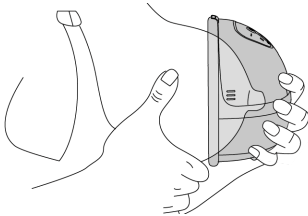
Two criteria will help you determine if the breast pump is positioned correctly:

- Whether you feel a noticeable suction that can pull out milk;
- Whether it is comfortable to wear.

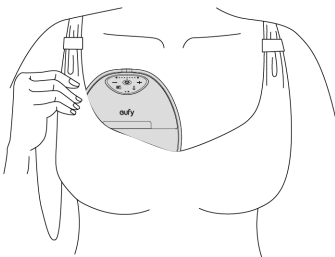
If the wearing position doesn't meet either of these criteria, you need to adjust the position of the pump.

It takes a bit of time for your body to adapt to a new pump, so don't be discouraged if the results aren't good at the very beginning.

1. Slightly lean forward to make sure your nipple is centered in the flange tunnel. The breast pump should be firmly against your breast.



2. Use a full-coverage nursing bra with a flap to create a tight seal between your breasts and the flange.



Using



To prevent leakage:




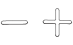
- When you complete assembling, check again that the outer ring of the flange is perfectly sealed.
- Make sure your nipple is at the center of the flange tunnel, and use a full-coverage nursing bra to create a tight seal between your breasts and the flange.
- Do not lean back while pumping. At the end of a session, lean forward to remove the pump.


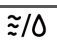



Can't feel suction or have zero or very little output?

- Inspect the duckbill valve and diaphragm for damage, including cracks, chips, holes, or tears. If a part is damaged, discontinue use and purchase a replacement.
- Check that the assembly is correct and that the four pieces (duckbill valve, flange tunnel, diaphragm, and pump hub) are perfectly sealed.
- Adjust the wearing position, make sure the nipple is at the center of the flange tunnel, the pump is sealed to your breast, and you can feel noticeable suction.
- Experiment with different flange or insert sizes.
- Try different suctions and rhythms.

**To ensure proper heating:**

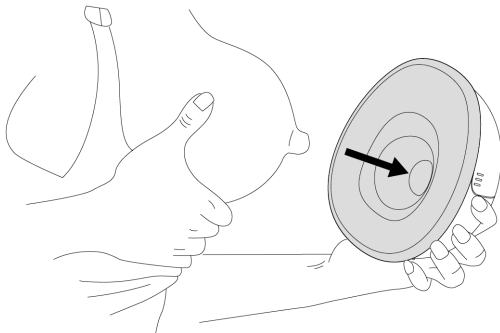
- Press the heating pins firmly into the container oval notch.
- Seal the gap between the pump hub and the diaphragm.
- Identify the heat settings and duration that suit you best without irritating your skin.

Button Controls		
	Press and Hold for 2 Seconds	Turn Breast Pump On / Off <ul style="list-style-type: none"> • The breast pump will turn off automatically after pumping for 30 minutes or pausing for 10 minutes.
	Press	Pause / Continue
	Press	Switch between Stimulation Mode and Expression Mode <ul style="list-style-type: none"> • Stimulation Mode: In this mode, the breast pump begins with a quick and short sucking pattern to get your milk to start flowing. • Expression Mode: In this mode, the breast pump begins with a slow sucking pattern for milk expression, sucking more deeply and more slowly.
	Press	Turn Heating On / Off
	Press	Increase / Decrease the Suction / Heat Level (To adjust the heat level, press the heating button first.)
	Press and Hold Simultaneously for 2 Seconds	L/R Pairing in the App


Light Guide		
	Steady Red	Battery Level <20%
	Flashing Red	Battery Level <10%
	White	In Stimulation / Expression Mode
	Steady Orange	In Heating Mode
	Flashing Orange	Heating Exception (Reassemble the flange and pump hub to ensure the heating pins are properly seated.)
	1 to 7 Indicators White / Orange	Suction Level: 1 to 7 Heat Level: 1 to 3
	L / R Indicator White	Left / Right Side Paired in the App

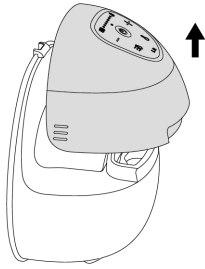
Transferring Milk

1. Pause or turn off the breast pump. Lean forward when taking out the pump to prevent leakage.

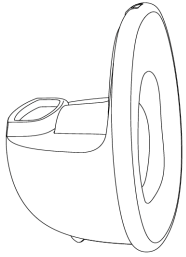


2. Remove the pump hub from the container. Refer to "Disassembling" step 1.

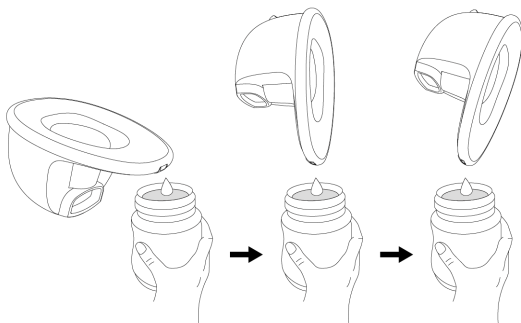
 Avoid disassembling any parts (including the diaphragm) other than the pump hub before transferring milk to prevent leakage.



3. Leave the container on the table ready for transfer.



4. Tilt the container with the flange up to pour milk. When the pouring spout faces down, tilt further to empty completely. Lastly, remove the diaphragm if needed to collect any trapped milk under it.



Downloading the App (Optional)

Download and install the eufy Baby app, then sign in or create an account. Follow the in-app instructions to add this device and complete the setup.

To enhance the experience of using eufy products, the existing eufy Baby app will be replaced by the eufy app in 2025.



Customer Service

- 12-month limited warranty on pump hub
- 3-month limited warranty on washable parts

(US/CA) +1 (800) 988 7973
 (UK) +44 (0) 1604 936200
 (DE) +49 (0) 69 9579 7960
 (中国) +86 400 0550 036
 (日本) 03 4455 7823
 (AU) +61 3 8331 4800
 (Egypt) +20 8000000826
 (UAE) +971 8000320817
 (Kuwait) +965 22069086
 (KSA) +966 8008500030

✉ support@eufy.com

