

Lansinoh®



Thrive 2-in-1 Breast Pump™

INSTRUCTIONS FOR USE

Read all instructions before using the pump and keep this manual for future reference.

Product Description

The Thrive 2-in-1 Breast Pump™ is designed to provide several medical benefits for lactating women.

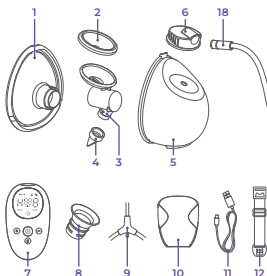
1. **Milk Production Support:** The breast pump helps stimulate the secretion of prolactin by the pituitary gland, promoting milk production to meet an infant's feeding needs.
2. **Milk Ejection and Breast Health:** The breast pump encourages the contraction of breast epithelium, aiding milk ejection and ensuring to empty the breast, which can relieve breast engorgement. Repeated pumping helps clear excess milk from ducts, reducing the risk of acute mastitis.
3. **Usage Environment:** This product is intended for personal use at home and for a single user. It is not recommended to use at medical institutions.

Contents

1. Parts in a Box	2
2. Before First Use	3
3. Assembling	3
4. Positioning the Flange	8
5. Operating the Pump	8
6. Battery and Charging.....	9
7. Bra Adjustment for Comfort.....	10
8. After Pumping.....	10
9. Cleaning and Disinfecting Instructions	12
10. Breastmilk Storage Guidelines.....	14
11. Troubleshooting	15
12. Technical Data	15
13. Limited Consumer Product Warranty (United States and Canada).....	17

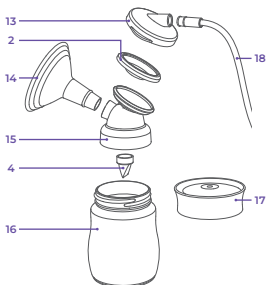
1. Parts in a Box

Hands-free Cup Kit



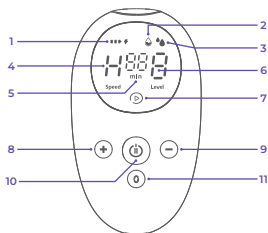
1. Hands-free Flange
2. Silicone Diaphragm
3. Hands-free Flange Body
4. Valve
5. Collection Cup
6. Collection Cup Cap
7. Pump Hub
8. Silicone Flange Insert
9. Tubing Y Connector
10. Travel Clip
11. USB Charging Cable
12. Bra Extension Strap

PowerPump Kit



13. Diaphragm Cap
14. SoftSeal Flange
15. Flange Body
16. Bottle
17. Storage Lid
18. Tubing and Tubing Connector

Pump Hub Control



1. Battery Power Display
2. Expression Mode
3. Stimulation Mode
4. Speed Indicator (High/Low)
5. Timer Display
6. Suction Level Indicator
7. Pause Indicator
8. Suction Increase Button
9. Suction Decrease Button
10. Power/Pause Button
11. Mode/Speed Selection Button

2. Before First Use

Disassemble the Thrive 2-in-1 Breast Pump™ and clean and disinfect the Hands-free Cup Kit and PowerPump Kit parts prior to the first use. See Section 9 for details.

The pump hub should never be rinsed or submerged in water. Wipe down the pump hub and keypad with a low-level disinfectant such as Ethyl or Isopropyl alcohol (70-90%).

3. Assembling

To assemble the pump, follow these steps carefully. Always wash and dry hands thoroughly with soap and water before handling the cleaned components.

CAUTIONS:

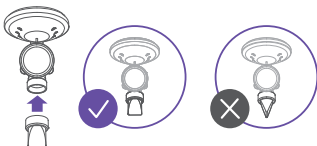
- Ensure all parts are cleaned per the instructions in this manual.
- Assemble the pump correctly to prevent leakage.

Hands-free Cup Kit:

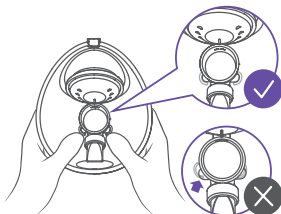
1. Attach the silicone diaphragm to the hands-free flange body and press to ensure seal.



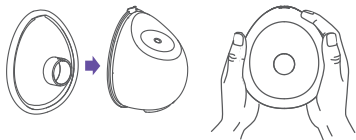
2. Attach the valve to the hands-free flange body, ensuring the correct orientation.



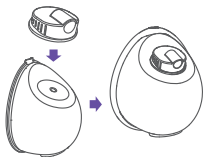
3. Place the silicone diaphragm & the hands-free flange body into circular slot on the collection cup, making sure to align tabs on the flange body to the guides on the collection cup. Then, press firmly to ensure a tight seal.



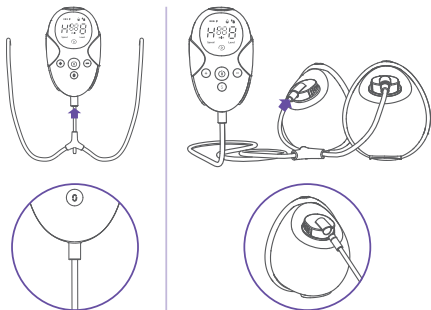
4. Attach the hands-free flange to the assembled collection cup & the hands-free flange body by inserting the nipple tunnel into the flange body. Align the pour spouts on top of the collection cup and press all the way around the cup to ensure a secure seal.



5. Attach the collection cup cap to the assembled collection cup.



6. Connect the long end of the tubing to the tubing port located at the bottom of the pump hub. Connect the other ends to tubing ports on the collection cup caps.

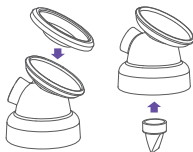


7. Attach the pump hub to the travel clip if desired, ensuring the clip is securely fastened.

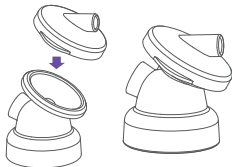


PowerPump Kit:

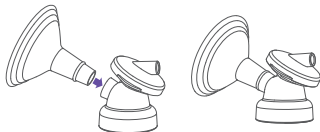
1. Attach the silicone diaphragm to the flange body and press the edges firmly to ensure seal. Attach the valve to the bottom of the assembled flange body.



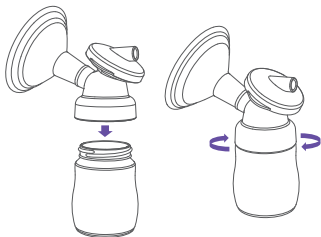
2. Place the diaphragm cap over the flange body and press to secure, ensuring the tubing portal is facing back.



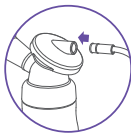
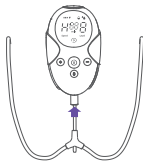
3. Insert the flange into the flange body, ensuring they are securely fastened together.



4. Attach the assembled flange body to the bottle and twist to seal.

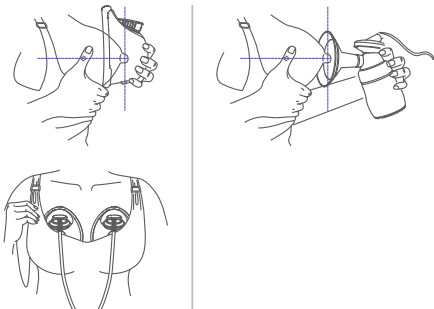


5. Connect the long end of the tubing to the tubing port located at the bottom of the pump hub. Connect the other ends to tubing ports on the diaphragm caps.




4. Positioning the Flange


Correct nipple alignment in the flange is important for safe and comfortable pumping. It can also help to reduce potential nipple damage and increase your milk expression.



5. Operating the Pump

1. To turn the pump on, press and hold the “” Power/Pause Button until the screen lights up. Tap to pause or resume the session.



2. Use the “” Mode/Speed Selection Button to switch between Stimulation Mode and Expression Mode. The mode icon will light up when activated.



3. Adjust suction levels (9 levels per mode) using the “+” and “-” buttons. There are two speeds—high (H) and low (L)—which can be adjusted by pressing the “0” Mode/Speed Selection Button for 2 seconds.



4. To power off, press and hold the Power/Pause Button.



NOTES:

- The pump has a memory function, automatically starting in the last mode and suction level used.
- The pump will automatically stop after 20 minutes of operation.

6. Battery and Charging

The pump cannot be used while charging. Once fully charged (3 bars displayed without flashing), it is ready for use. If only one bar is flashing, please charge the pump. It will take approximately 4 hours to fully charge with the provided charging cable.



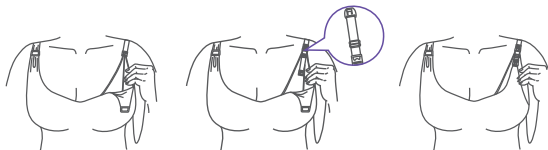
Battery Status Indicator

BATTERY STATUS INDICATOR DISPLAYED	OPERATING TIME REMAINING
3 bars	Approximately 250 minutes
2 bars	Approximately 160 minutes
1 bar	Approximately 80 minutes
1 bar flashing	Approximately 5 minutes

WARNINGS: Using incompatible charging equipment could potentially damage the pump. Please refrain from using a fast charging cable and a fast charging brick.

7. Bra Adjustment for Comfort

Adjust bra straps using the bra extension strap for optimal comfort and suction. Secure ends to nursing bra and adjust to the desired length.



8. After Pumping

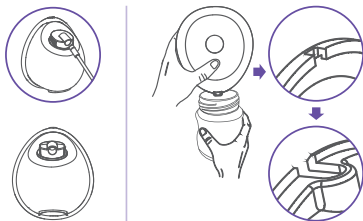
1. Once you finish the session, press and hold the Power/Pause button to switch off the pump.



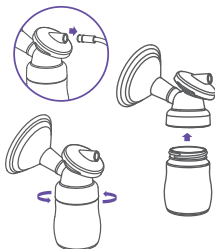
2. Break the seal between the flange and breast using your finger and carefully remove the collection cup or PowerPump kit.



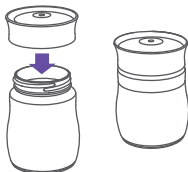
3. If you're using the Hands-free cup kit, detach the tubing and pour the collected milk into a storage bottle or a breastmilk storage bag, ensuring the collection cup's pour spout aligns with the opening to prevent spills.



4. If you are using the PowerPump kit, detach the tubing and carefully remove the flange body.



5. Use the storage lid to seal the bottle, ensuring that the milk does not overflow.



6. Clean all components per the cleaning instructions.

9. Cleaning and Disinfecting Instructions

Cleaning Before First Use

1. Always wash and dry hands thoroughly with soap and water before handling the breast pump.
2. Disassemble the Hands-free cup kit and PowerPump kit and place the parts in a large pot. The pump hub, tubing, tubing connectors, or pump connector should never be rinsed or submerged in water. Wipe down the pump hub and keypad with a low-level disinfectant such as Ethyl or Isopropyl alcohol (70-90%).
3. Cover the parts with water, making sure there is room for all the parts to be submerged in water in the pot.
4. Bring the water to a boil and allow the parts to boil for 5 minutes.
5. After boiling, remove the parts from the pot with tongs and place on a clean towel to dry, covering the parts with a second towel.
6. Allow the parts to dry completely before assembly and use. Partially dried parts may affect the operation of the pump or could cause deterioration of the components.
7. Once the parts are dry, they can be stored in a clean plastic bin with a lid or in a clean plastic zipper bag. Do not store the parts in a container or a bag until fully dry.

DO NOT rinse or submerge the pump hub. It needs to be kept dry to prevent damage. DO NOT boil or wash tubing, tubing connectors, or pump connector!

Before Each Use

1. Always wash and dry hands thoroughly with soap and water before handling the breast pump.
2. Before assembling the Hands-free cup kit and Powerpump kit, be sure that all the parts are completely dry.
3. Visually inspect the individual components for cracks, chips, tears, discoloration or deterioration. These may affect the functionality of the pump.
4. Should you have any questions or concerns about your parts please contact Lansinoh® Customer Service at **800-292-4794** for further guidance.

WARNING: It is highly recommended not to use any cleaning method other than the cleaning methods mentioned in this instruction manual.

Cleaning After Each Use

DO NOT boil or wash tubing, tubing connectors, or pump connector!
DO NOT rinse or submerge pump hub, tubing, connectors, or rechargeable battery in water!

1. Disassemble the Hands-free cup kit and PowerPump kit, setting aside the tubing and connectors.
2. Rinse the kit parts with cold water immediately after each use. Place the parts in a clean wash basin used only for washing infant feeding equipment. Do not place the parts directly in the sink, because germs in sinks or drains could contaminate the parts. The pump hub should never be rinsed or submerged in water. Wipe down the pump motor, the keypad, and the surface the pump was placed on with a low-level disinfectant such as Ethyl or Isopropyl alcohol (70-90%). Wipe down the exterior of the tubing as needed, making sure not to get any disinfectant inside the tubes during cleaning.
3. Hand wash the kit parts using warm, soapy water. A nipple brush may be used to scrub the hard plastic pieces of the Hands-free kit and PowerPump kit but should not be used on the silicone parts.
4. Rinse the parts with running clean, warm water, or by submerging in fresh water in a separate basin that is used only for cleaning infant feeding items.
5. Place the kit parts on a clean, unused dish towel or paper towel in an area protected from dirt and dust. Do not use a dish towel to rub or pat items dry. Allow the parts to dry completely before assembly and use. Partially dried parts may affect the operation of the pump.
6. Once the kit parts are dry, they can be stored in a clean plastic bin with a lid or in a clean plastic zipper bag.
7. Clean wash basin and bottle brush. Rinse them well and allow them to air-dry after each use. Wash them by hand or in a dishwasher at least every few days.

Disinfecting Kit Parts:

1. Place clean parts in a pot and cover the parts with water, making sure there is room for all the parts to be submerged in water in the pot.
2. Bring the water to a boil and allow the parts to boil for 5 minutes.
3. After boiling, remove the parts from the pot with tongs and place on a clean towel to dry, covering the parts with a second towel.
4. Allow the parts to dry completely before assembly and use. Partially dried parts may affect the operation of the pump or could cause deterioration of the components.
5. Once the parts are dry, they can be stored in a clean plastic bin with a lid or in a clean plastic zipper bag. Do not store the parts in a container or a bag until fully dry.

10.Breastmilk Storage Guidelines

Breastmilk Storage and Thawing Guidelines for Full-term Healthy Babies

Check with your healthcare provider or an International Board Certified Lactation Consultant for specific storage instructions. When freezing, store in the back of the freezer and do not store milk in the door as temperature can fluctuate as the door is opened and closed.

Guide to storing fresh breastmilk for use with healthy, full-term babies

PLACE	TEMPERATURE	HOW LONG	THINGS TO KNOW
Countertop, table	Room temperature (up to 77°F)	Up to 4 hours	Containers should be covered and kept as cool as possible. Covering the container with a clean cool towel may keep milk cooler. Throw out any leftover milk within 2 hours after the baby is finished feeding.
Refrigerator	40°F	Up to 4 days	Store milk in the back of the refrigerator. When at work, it's OK to put breastmilk in a shared refrigerator. Be sure to label the container clearly.
Freezer	0°F or colder	Within 6 months is best. Up to 12 months is acceptable	Store milk toward the back of the freezer where the temperature is most constant. Milk stored at 0°F or colder is safe for longer durations, but the quality of the milk might not be as high.

Source: Adapted from 7th Edition American Academy of Pediatrics (AAP) Pediatric Nutrition Handbook (2014); 2nd Edition AAP/American College of Obstetricians and Gynecologists (ACOG) Breastfeeding Handbook for Physicians (2014); Academy of Breastfeeding Medicine (ABM) Clinical Protocol #8 Human Milk Storage Information for Home Use for Full-Term Infants(link is external) (2017); CDC Human Milk Storage Guidelines (2024).

Date all breastmilk and use the oldest breastmilk first.

NOTE: DO NOT refreeze milk once it is thawed.

Thawing

Thaw frozen milk in the refrigerator or place the containers under cool running water, gradually warming the water until the milk is thawed. Thawed milk can be kept in a refrigerator for up to 24 hours.

Breastmilk is not homogenized and you may notice that it separates as it sits. Gently swirl thawed milk before feeding to baby to mix the layers that have separated. Breastmilk can vary in color and consistency depending upon the time of the day that the milk was expressed, what you have eaten, and the age of the baby at the time of pumping.

Please reference the below link for the most current breastmilk storage and usage guidelines: https://www.cdc.gov/breastfeeding/recommendations/handling_breastmilk.htm

NOTE: DO NOT MICROWAVE HUMAN MILK! Microwaving alters the composition of the milk. Microwaving also may create “hot spots” in the milk that could burn the infant.

11. Troubleshooting

Pump has no power

- Verify the battery is properly charged. If battery is drained. Use the provided USB-C cord and to connect the pump motor to a USB power source and charge the pump for 4 hours.
- If the pump is still not powering up, please contact Lansinoh® Customer Service by calling **800-292-4794** or emailing **customerservice@lansinoh.com**.

12. Technical Data

1. Power Supply

Battery operation: Rechargeable Li Ion battery, 3.7V/2000mAh/18500

Operating time: Approximately 250 minutes of use, depending on battery life and breast pump settings

Pump power dissipation: 4 Watts maximum

Voltage regulation: Linear regulator with low swing voltage and short-circuit protection

2. Control System

Control Unit: Microcontroller with integrated program memory and pressure sensitivity

Program memory: 16K flash memory (ROM), 1K memory (RAM)

Human-machine interface: LED display, soft buttons

Selectable pumping style mode:

2 pumping style modes are selectable and controlled from buttons

Adjustable suction level: 9 suction levels are selectable and controlled from buttons

Suction vacuum level (Expression): Minimum 60 mmHg, Maximum 280 mmHg










Pumping Frequency: High (H) and Low (L) frequency options are available.







For Double pumping:

- Maximum frequency in massage mode: 52 times/min
- Maximum frequency in expression mode: 50 times/min






For Single pumping:

- Maximum frequency in massage mode: 55 times/min
- Maximum frequency in expression mode: 53 times/min

SYMBOLS	MEANING OF THE SYMBOLS
	Follow instructions for use
	Caution
	Identifies the manufacturer
	Indicates the date of manufacture
	Type BF applied part
	Class II equipment
	Keep the device dry
	Keep the device away from sunlight
	This way up

	Indicates the temperature limitation for operation, transport and storage.
	Indicates the humidity limitation for operation, transport and storage.
	Indicates the atmospheric pressure limitation for operation, transport and storage.
IP22	Indicates the protection against ingress of solid foreign objects and against harmful effects due to the ingress of water
	The device is to be rendered unusable and it must be disposed of as sorted waste in accordance with local waste electrical and electronic equipment regulations. To avoid the harmful effects on the environment and public health align with your defined local return and collection rules for waste electrical and electronic equipment (incl. batteries).
	Indicates that the packaging contains products intended to come in contact with food.
	Indicates to handle the fragile device with care.

	Indicates that a specific separate power adapter is required for connecting the device to the supply mains and specifies its model/type.
	CE marking indicates that a product has been assessed by the manufacturer and deemed to meet EU safety, health and environmental protection requirements
	Keep out of reach of children
	Do not use metal tools to touch or open battery
	Product or packaging material can be recycled
	Do not throw battery into fire

	Number 20 inside the universal recycling symbol represents items made of cardboard. Cardboard is recyclable, but not all locales accept it.
	Guarantees that packaging with this symbol is recyclable and will be accepted by cardboard recyclers.
	The "Recognized Component Mark" is a type of quality mark issued by Underwriters Laboratories (UL). It is placed on components which are intended to be part of a UL listed product.
	Indicates that the power adapter is for indoor use only.
	Indicates that the device's electromagnetic interference is the below the limit set by the US Federal Communications Commission.

13. Limited Consumer Product Warranty (United States and Canada)

This product is warranted to the original consumer purchaser (the "purchaser") to be free from defects in material and workmanship which are not commercially acceptable for the period of one year from the date of purchase on the pump mechanism (pump body and pump hub) and the period of 90 days from the date of purchase on all other product components. This warranty is provided only to products purchased in the United States or Canada and parts shipped within the United States or Canada.

Warranty coverage terminates if you (1) sell or otherwise transfer this product to another person; (2) improperly or incorrectly perform any maintenance or repair of this product; (3) use any non-Lansinoh® brand replacement parts with this product; or (4) misuse, abuse, or alter the product. This warranty gives you specific legal rights and you may also have other rights, which vary, by location.

LANSINOH® MAKES NO EXPRESS OR IMPLIED WARRANTY OF ANY KIND REGARDING THE PRODUCT OTHER THAN THOSE WARRANTIES EXPLICITLY SET FORTH HEREIN. ANY IMPLIED WARRANTY, INCLUDING ANY IMPLIED WARRANTY

OF MERCHANTABILITY OR ANY IMPLIED WARRANTY OF FITNESS FOR A PARTICULAR PURPOSE, TO THE EXTENT PERMITTED BY LAW, SHALL BE LIMITED IN DURATION TO A PERIOD OF 90 DAYS FROM THE DATE OF PURCHASE BY THE ORIGINAL PURCHASER.

In the event the product is found by Lansinoh® to not meet the above limited warranty, as purchaser's sole and exclusive remedy Lansinoh® will repair or, at the option of Lansinoh®, replace this product without charge for such replacement or parts or labor. No replacement or repair is provided outside of the United States or Canada.

NOTE: The purchaser shall bear all expense for returning this product to Lansinoh®.

Only Lansinoh® brand replacement parts are recommended for use with Lansinoh® breastfeeding products.

TO THE EXTENT PERMITTED BY LAW, LANSINOH® SHALL NOT BE LIABLE FOR ANY INCIDENTAL OR CONSEQUENTIAL DAMAGES INCLUDING, BUT NOT LIMITED TO, REPLACEMENT COSTS RESULTING FROM THE BREACH OF ANY EXPRESS OR IMPLIED WARRANTY.

If you wish to make a claim under this warranty, you must return the product to Lansinoh® Laboratories Inc., prepaid, together with your dated bill of sale or other dated proof of purchase and a brief statement of the problem, along with a Replacement Authorization (RA) number. You may obtain the appropriate Replacement Authorization number and shipping address by calling the phone number or sending an email to the email address provided below.

Items returned without an associated Replacement Authorization Number will be returned to sender.

To obtain the address to Return Goods or a Replacement Authorization Number:
800-292-4794 | customerservice@lansinoh.com

Distributed by: / Distribuido por: Lansinoh Laboratories, Inc.
Alexandria, VA 22314 USA | +1 800-292-4794 | [Lansinoh.com](https://www.Lansinoh.com)

Lansinoh® is a registered trademark of Lansinoh Laboratories, Inc.
© 2024 Lansinoh Laboratories, Inc. All rights reserved. Printed in China.