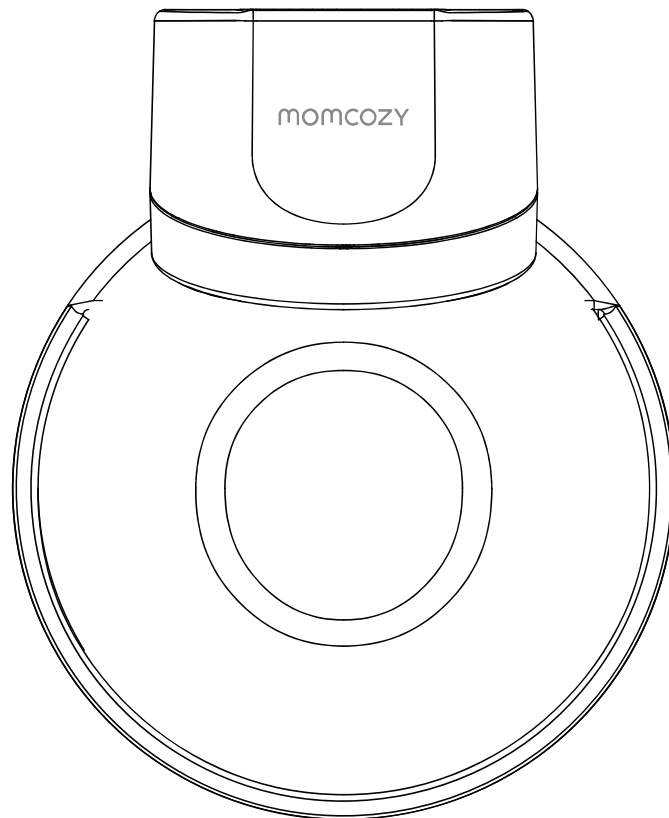


momcozy

Wearable Breast Pump

S12 Pro

User Guide



Read this user manual carefully before using your electric breast pump and keep this manual for future reference.

TABLE OF CONTENTS

1. IMPORTANT SAFEGUARDS	1
2. INTENDED USE	3
2.1 Indications For Use	3
2.2 Contraindication	3
2.3 Operating Life	3
3. PRODUCT DESCRIPTION	3
3.1 Parts	3
3.2 Control	4
4. GETTING STARTED	5
4.1 Select Flange Size	5
4.1.1 Stimulate The Nipple	6
4.1.2 Test The Flange Fit	6
4.2 Get The Right Bra	7
4.3 Recommended Posture	8
5. PUMPING	8
5.1 Assembly	8
5.2 Alignment	10
5.3 Secure Pump In Bra	11
5.4 Turn On Pump	11
5.5 Vacuum Pressure Settings	11



6. FINISHING PUMP - - - - -	12
6.1 Pause / Turn Off Pump - - - - -	12
6.2 Remove Pump - - - - -	12
6.3 Collect the Milk - - - - -	13
6.4 Charging - - - - -	13
7. CLEANING, TRANSFER AND STORAGE - - - - -	13
7.1 Cleaning - - - - -	13
7.1.1 Disassemble - - - - -	13
7.1.2 Cleaning - - - - -	14
7.1.3 Sanitize - - - - -	17
7.2 Transfer - - - - -	19
7.3 Storage - - - - -	19
7.3.1 Pump Storage - - - - -	19
7.3.2 Milk Storage - - - - -	20
7.4 Disposal - - - - -	20
8. TROUBLESHOOTING - - - - -	21
9. TECHNICAL SPECIFICATIONS - - - - -	22
10. EMC GUIDANCE - - - - -	23
11. GLOSSARY & SYMBOLS - - - - -	26
12. FCC COMPLIANCE - - - - -	28

1. IMPORTANT SAFEGUARDS

WARNING

- *If you are a mother who is infected with Hepatitis B, Hepatitis C or Human Immunodeficiency Virus (HIV), pumping breast milk will not reduce or remove the risk of transmitting the virus to your baby through your breast milk.
- *Powered breast pumps that are designed for single users should never be rented or shared.
- *Pregnant women should not use the breast pump, as pumping can induce contractions or premature labor.
- *The Wearable Breast Pump (S12 Pro) is not intended to be used during air transport.
- *This product is a personal care product for private use, which should not be shared with other people. Sharing with others may cause health risks. Also, the wear-down or breakdown caused by the use of other people is not included in the warranty.
- *If the cable or the plug is damaged, soaked in the water or in other situations which cause them to be unable to operate normally, please do not use this product.
- *If you want to clean the pump motor; only wipe it with a clean dry or wet cloth. Please do not wash it or soak it with water or disinfectant.
- *Do not use any chemical products to clean the silicone flange, or it may cause malfunction or health risks.
- *Please only use the original parts of this pump, do not modify the parts or use the parts from other products, or it may cause malfunction.
- *Besides the parts of this product, please do not put any other object into this product.
- *Do not use the pump when it is connected to the charger.
- *Do not put the pump motor in the water.
- *Do not put the pump in the refrigerator or freezer.
- *Do not store the parts when they are still wet, or it may cause germs or pollution.
- *Do not use the microwave to heat the breast milk.
- *If you want to unfreeze the stored breast milk, please let it unfreeze naturally. Don't pour hot water into the bag or soak the bag in the hot water to unfreeze, or it may go bad or affect the taste.
- *If the unfrozen breast milk can not be drunk at one time, please throw it away instead of putting it back in the refrigerator or freezer.
- *Please use a new bag to store newly pumped breast milk, don't put fresh milk into the bags which have already stored breast milk.
- *Don't mix the fresh breast milk with unfrozen milk for drinking.



PRECAUTION

- *Before each use, visually inspect the individual components for cracks, chips, tears, discoloration or deterioration. In the event that damage to the device is observed, please discontinue use until the parts have been replaced.
- *If discomfort is felt, then suction can be broken by inserting a finger between the breast and the flange.
- *If irritation or discomfort occurs, discontinue use and see a healthcare provider.
- *If the USB type-C charging cable casing or wiring becomes loose, separated, or frayed, stop use of the charging cable immediately and contact the device manufacturer. Stop using the device immediately if you note any smoke or burning from the pump unit or charging cable.
- *Monitor milk level during pumping to ensure overfill does not occur.
- *If you feel excessive warmth from the S12 Pro Wearable breast pump while pumping, stop pumping immediately and remove pump.
- *Before use, please ensure all the surfaces of silicone flange, silicone valve, silicone diaphragm, pump motor, linker and milk collector are clean.
- *Before use, please ensure silicone flange, silicone valve, silicone diaphragm, pump motor, linker and milk collector have been assembled and connected well to the pump.
- *Please check all the parts regularly to ensure there is no wear, tear, degradation or deterioration.
- *If the package is damaged or tampered with when it gets to you, please do not open the package or use the product. Contact our customer service group for an exchange.
- *All the parts of this pump are not resistant to high temperature, so please keep them away from heat sources.
- *Do not use any flammable products or come near any flammable sources when you are using or charging this pump.
- *Do not use this pump when you are lying down, stretching or doing vigorous exercise.
- *Do not use this pump when you are sleeping or sleepy.
- *Do not wear this pump when you are not breastfeeding.
- *Do not use this pump when you are driving or operating heavy machinery.
- *The performance of this pump may be affected in high-altitude places, even in pressurized cabins.
- *The frequency of communication equipment may affect the performance of this pump.
- *This pump is designed for breast pumping, please use it in strict accordance with the described purpose in this manual.

2. INTENDED USE

2.1 Indications For Use

The Momcozy Wearable Breast Pump S12 Pro is intended to express milk from lactating women in order to collect breast milk from their breasts. The device is intended for a single user.

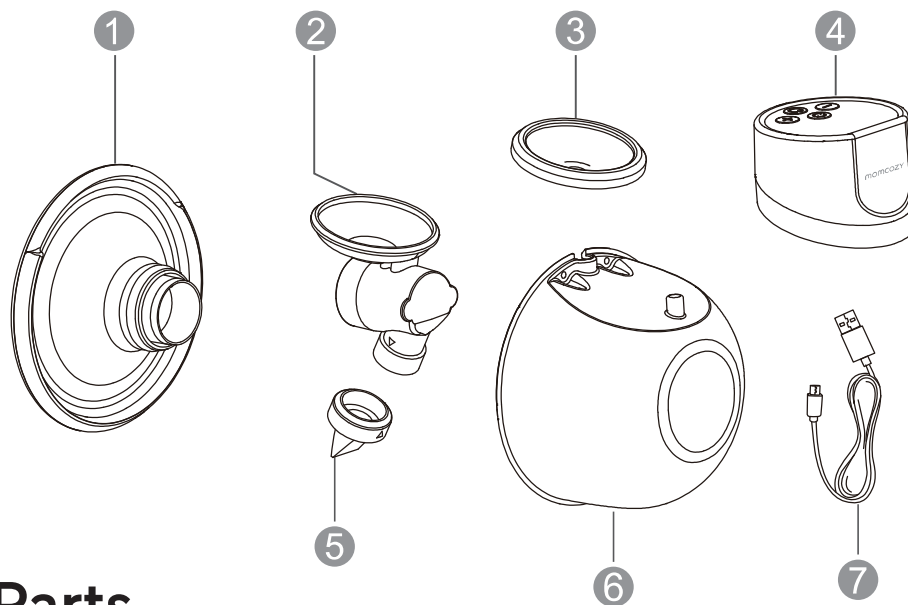
2.2 Contraindication

Do not use this Pump if you have an active implanted device that would be affected by a magnetic field (e.g., pacemaker; implantable cardioverter-defibrillator).

2.3 Operating Life

The expected operating life of the washable parts is three months. It is recommended to replace the washable parts after long-term storage or before pumping for your next child.

3. PRODUCT DESCRIPTION



3.1 Parts

- ① Double-sealed Flange
- ② Linker
- ③ Diaphragm
- ④ Pump Motor
- ⑤ Silicone Valve
- ⑥ Milk Collector
- ⑦ USB Type-C Cable

Other Accessories Included:

Storage Bag

Nursing Bra Extender

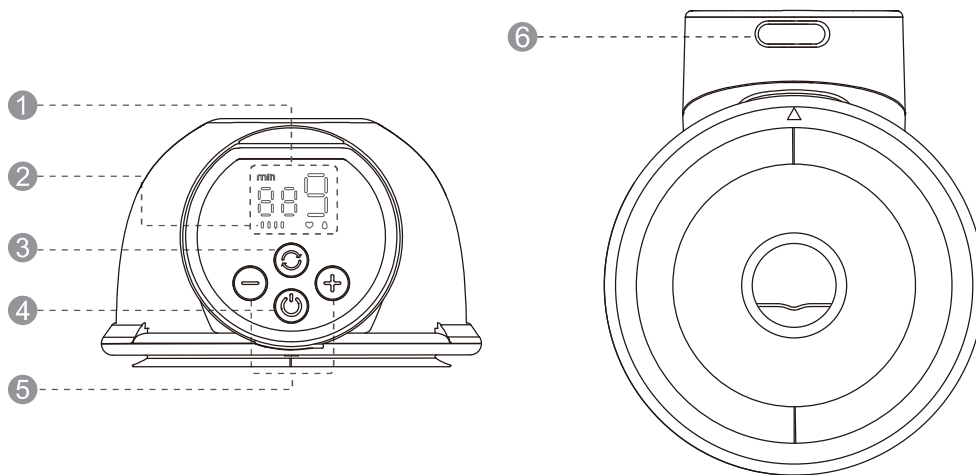
Cleaning Brush

Quick Start Guide

Flange Size Ruler



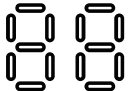

Milk Storage Bag

3.2 Control






- ① LED Display
- ② Battery Level Indicator
- ③ Mode Selection
- ④ On / Off / Pause
- ⑤ Decrease / Increase
- ⑥ Charging Port

Buttons	Functions
	Long press and hold to turn on / off; Short press to pause, then press any button to continue your pumping session.
	Mode selection
	Decrease suction strength
	Increase suction strength
	Stimulation Mode: In this mode, the breast pump begins with a quick and short sucking pattern to get your milk to start flowing.
	Expression Mode: The breast pump begins with a slow sucking pattern for milk expression, sucking more deeply and more slowly.

	Mixed Mode: In this mode, the breast pump begins with a quick and short sucking pattern and then with a slow and long sucking pattern.
	Suction Level Display: The breast pump has 9 suction levels to choose from.
	Running Time Display
	Battery Display

Battery Level Indicator

	Low Battery	The first battery indicator bar flashes.
	In Charging	When the pump is charged, the battery indicator lights up one by one, displaying an increasing battery percentage from 25%, 50%, 75%, to 100%, then switches off and repeats this process until the pump is fully charged.
	Fully Charged	Solid White

4. GETTING STARTED



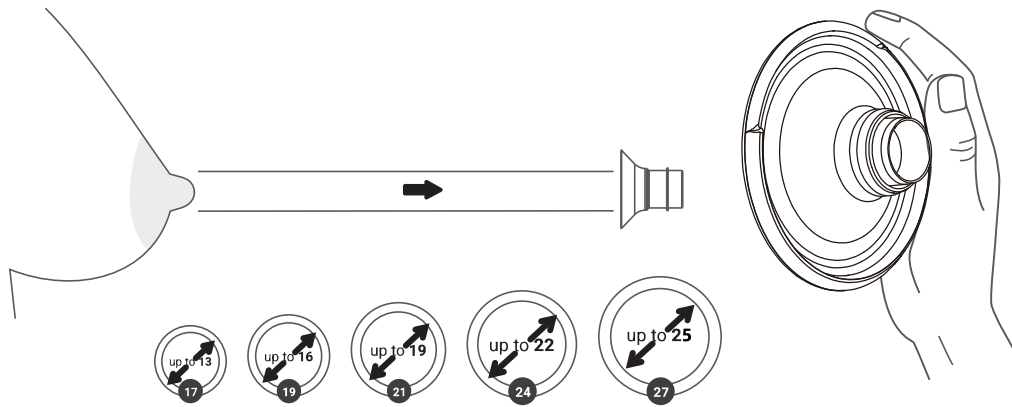
WARNING

Wash hands with soap and water, and inspect and assemble clean pump kit.

Normally, the duration of a pumping session can last up to 30 minutes. Stop using the device if you feel any discomfort.

4.1 Select Flange Size

This pump only includes a 24 mm silicone flange. If the flange provided does not fit, you can find a 27 mm flange and flange inserts of 21 mm, 19 mm, and 17 mm are available for purchase on Amazon. Type "momcozy" in the search bar and find the flange size and flange insert that fits you.



Flange Size Chart

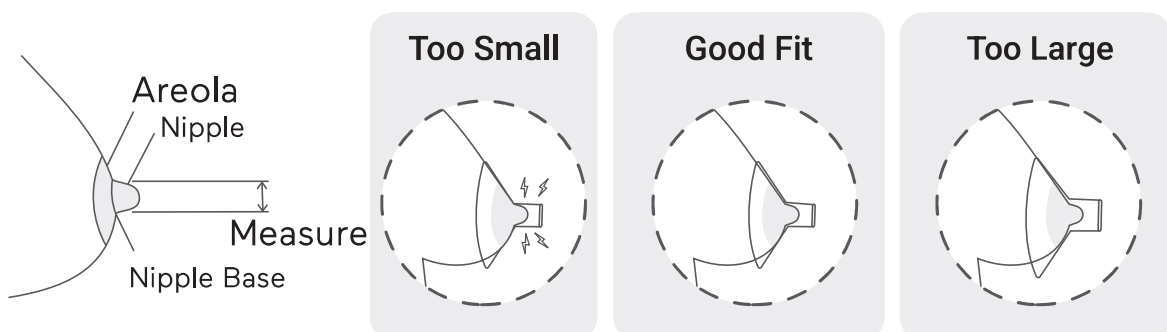
Nipple Measurement (mm)	11-13	14-16	17-19	20-22	23-25
Flange (mm)	17	19	21	24	27

4.1.1 Stimulate The Nipple

1. Stimulate your nipple to get a full size (do not skip this step!).
2. Place the nipple into the smallest hole you can comfortably fit into without forcing it.
3. Select the hole that can comfortably fit the very base of your nipple.
4. Get your measurement based on the sizing chart.

4.1.2 Test The Flange Fit

1. To find the suitable flange size, first, you need to make sure you place the flange in the right place on your breast.
2. Please press the flange on your breast until there is no gap. Make sure your nipple is right in the middle of the flange.



Too Small

Too small: During pumping, if your nipple continues to rub against the inner wall of the flange, then this flange is too small for you.

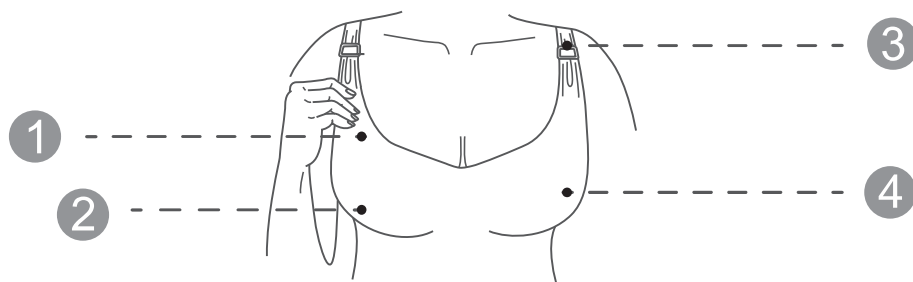
Good Fit

Suitable fitting: During pumping, if your nipple moves smoothly without rubbing or touching the inner wall of the flange, and almost no areola is sucked inside, then this flange is right for you.

Too Large

Too large: During pumping, if a large area of areola is sucked inside, then this flange is too big for you.

4.2 Get The Right Bra



- ① Made of stretchy fabric
- ② No underwire or padding
- ③ Has a flap
- ④ Full coverage

NO GAP

When you put the pump inside your bra, the silicone flange of this pump should be firmly pressed against your skin without a gap.

IF IT MOVES

If you feel the pump moves during use, please tighten your bra strap to adjust the pump again, or choose another bra.

4.3 Recommended Posture



WARNING

Always sit or stand upright while pumping to prevent the milk from leaking. This pump is not be used when lying down or sleeping to ensure proper orientation is maintained during use.

POSTURE

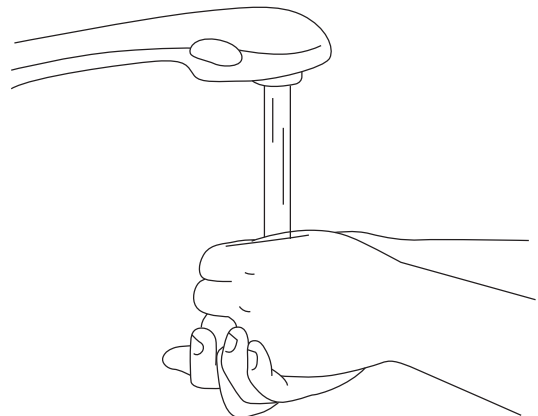
Make sure the pump and the milk collector always stay at the vertical angle. Otherwise, the milk will spill out.

5. PUMPING

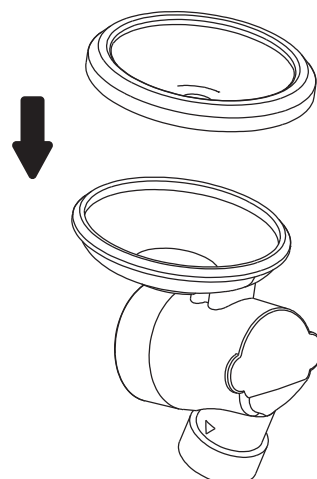
5.1 Assembly

Before use, please ensure all parts are installed correctly.

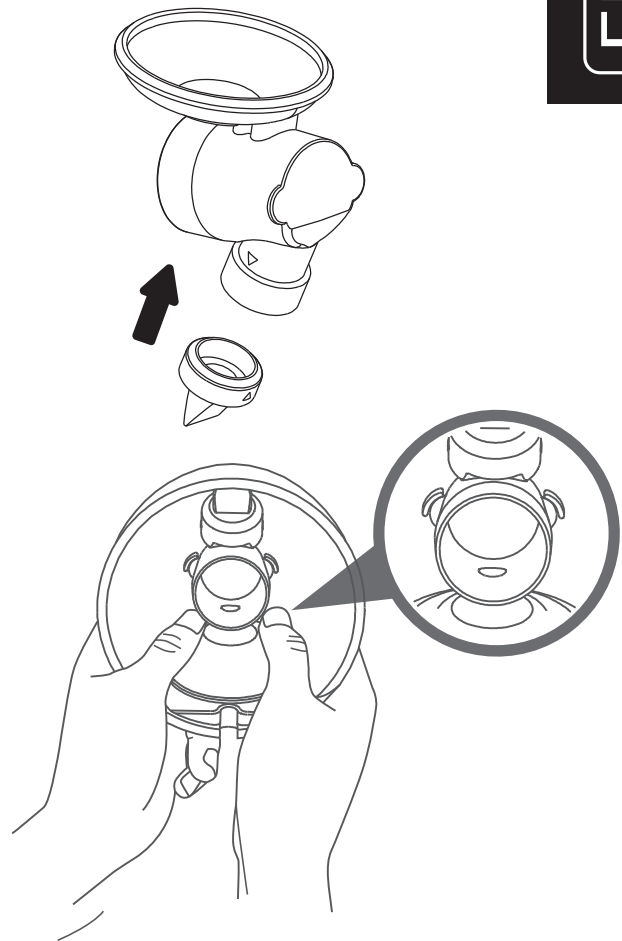
1. Wash your hands thoroughly with soap and water.



2. Put the silicone diaphragm into the linker and apply mild pressure around the edge until the silicone diaphragm seals well with the linker.

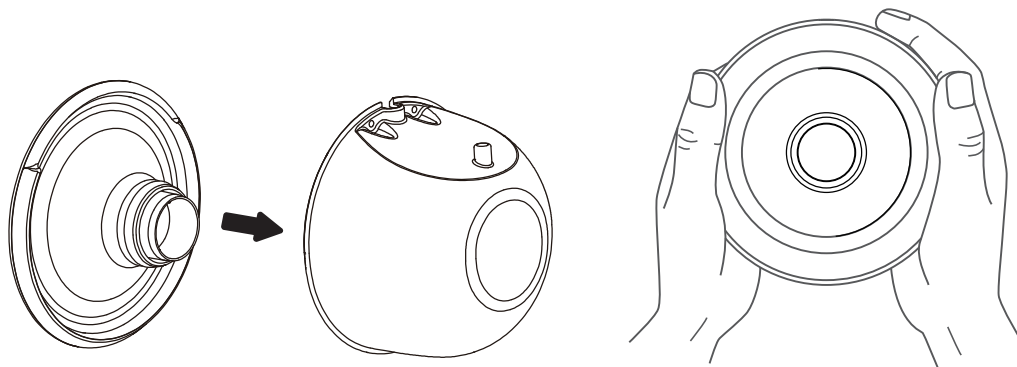


3. Connect the silicone valve with the end of the linker, and apply mild pressure to push the silicone valve to fit onto the linker securely.

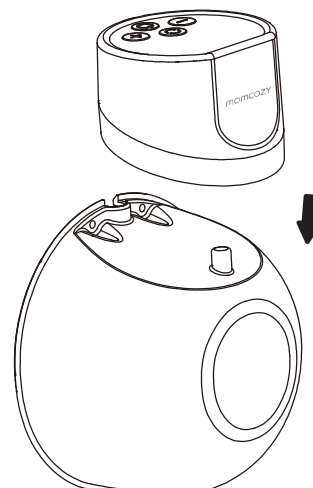


4. Put the assembled linker part into the milk collector, and align the "ear" notch of the linker with the inner groove of the milk collector. Press the silicone diaphragm onto the round hole of the milk collector, to make them fit well.

5. Connect the flange with the main body. Make sure that the flange fits securely around the rim by pressing it down with your thumbs.

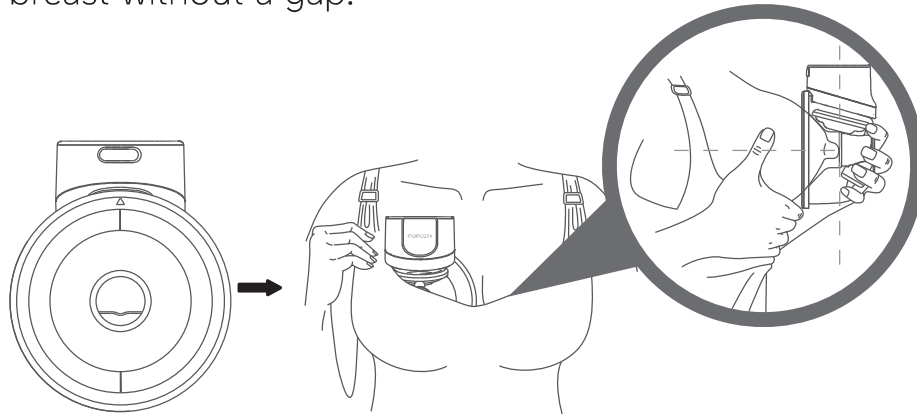


6. Insert the cylindrical protrusion located on the milk collector into the hole on the pump motor, and then align the groove on the milk collector with the notch on the pump motor.



5.2 Alignment

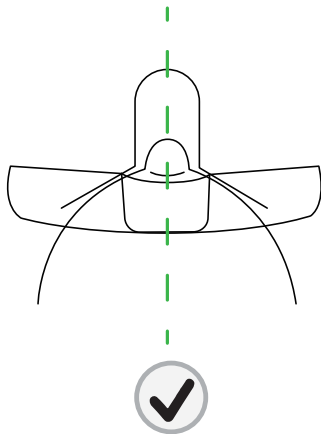
1. In the process of pumping, please make sure the pump is pressed tightly on your breast without a gap.



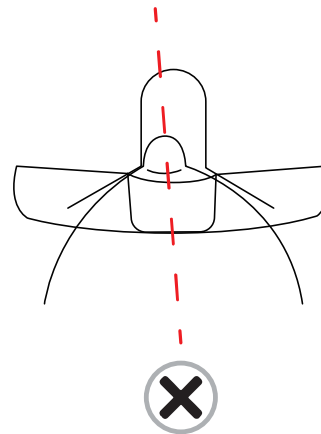
2. To align, hold the flange against your breast so you can see if your nipple is centered in the flange tunnel. You may need to bend forward.

3. After you've aligned, look through the flange to confirm your nipple is centered before connecting the pump. The tip of your nipple should not touch the top, sides or bottom of the flange tunnel. If it does, try again.

First Perspective



Correct Alignment
Milk expression

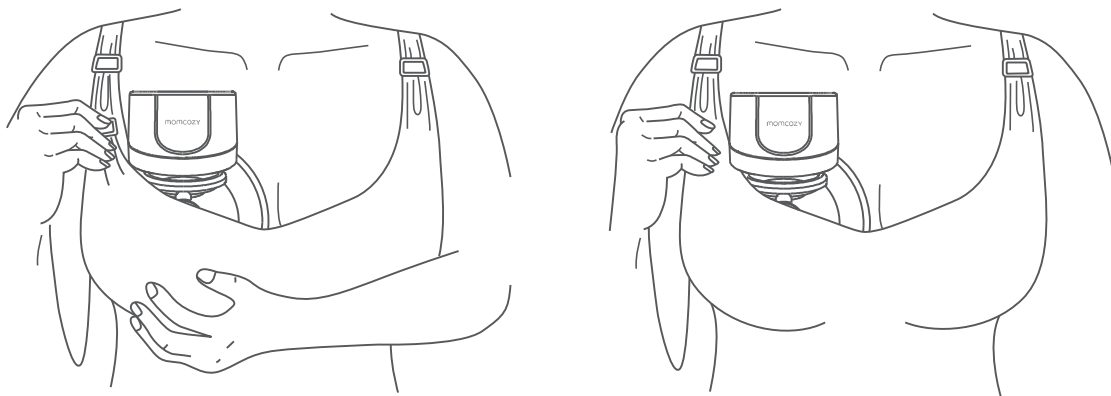


Incorrect Alignment
Try again

IMPORTANT:

- * Correct nipple alignment is key to comfort expression and performance.
- * Nipple must be positioned correctly in Flange Tunnel before pumping to avoid discomfort.
- * See Section 4.1. GETTING STARTED-Select Flange Size

5.3 Secure Pump In Bra



Secure pump in place by bra, taking care to keep pump pressed firmly against breast. If necessary, tighten bra to keep pump securely in place and start pumping.

5.4 Turn On Pump

Do not slide pump directly into your bra, follow step-by-step instructions. Disconnect from Charger before use.

Consult your healthcare practitioner to understand how long you should pump. Momcozy pump turns off automatically after 30 minutes.

Long press the On / Off / Pause button to turn on or turn off the pump. Short press the On / Off / Pause button to pause, then press any button to continue your pumping session.

Tip: Momcozy pump gets warm during running. Don't worry! This is normal.

How To Select Modes

3 Modes: Stimulation Mode & Expression Mode & Mixed Mode

When you first use the pump, the default setting is level 1 suction strength of Mixed mode.

Memory function: The pump will remember and start with the previous suction strength and mode when you use it next time.

Short press the Mode Selection button to switch among 3 modes.

5.5 Vacuum Pressure Settings

Momcozy pump has 9 vacuum pressure settings for each mode, giving you control over what feels comfortable and works most efficiently in both stimulation and expression modes.

Once you can feel the vacuum pressure on your nipple, use the Increase/Decrease button to adjust vacuum pressure to find your preferred setting in both modes. The LED display will be off after no operation for 20 seconds, press any button can activate the LED display.

Tip: A higher vacuum pressure does not always mean a higher volume of milk. Putting your nipple under excessive stress can reduce milk production. Always ensure you are pumping at a comfortable level. If you don't feel suction, please check the pump is assembled correctly (see section 5 PUMPING-5.1 Assembly).

Precautions

- *Momcozy pump does not support use while charging. Always disconnect from the charger and close the charging cap before use.
- *Momcozy pump should not be used while lying down, engaging in strenuous activities or performing activities with risk of harm.
- *Using a breast pump should not cause pain. Do not try to express with a vacuum pressure setting that is too high or uncomfortable. If excessive discomfort or pain is felt during pumping, stop pumping, break the seal around your nipple and discontinue the session.

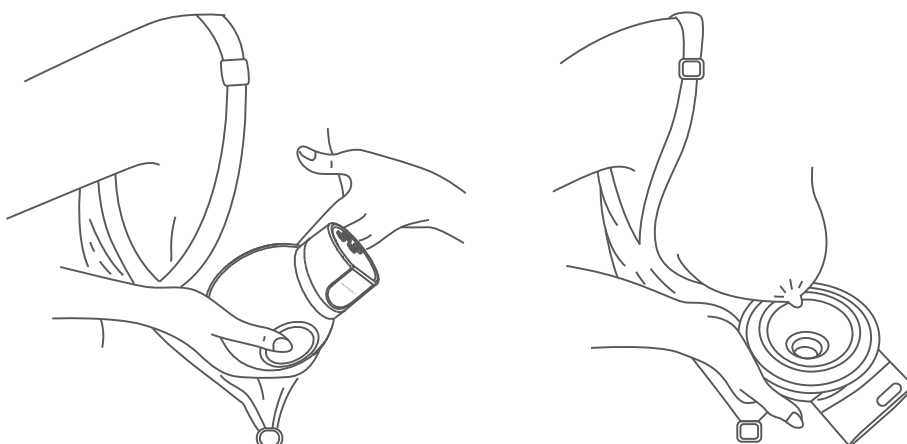
6. FINISHING PUMP

6.1 Pause / Turn Off Pump

To pause while pumping, short press On / Off / Pause button and the mode indicator will be blinking. Press any button to continue your pumping session; long press On / Off / Pause button for 2 seconds to turn off the pump.

6.2 Remove Pump

Use your finger to break the seal between the flange and the breast tissue. Keep the milk collector vertical when removing the pump, then keep the flange opening side up to prevent milk from pouring over.



Tip: We recommend the user to stop the pumping session once the expressed milk volume of the milk collector approaches 120 ml to avoid overflow.

6.3 Collect the Milk

Collect breast milk with a sterilized container or special breast milk storage bags.

6.4 Charging

*The battery indicator will turn solid white when fully charged.

1. When the battery is low, the first battery indicator bar flashes ;
2. When charging, the battery indicator lights up one by one, displaying an increasing battery percentage from 25%, 50%, 75%, to 100%, then switches off and repeats this process until the pump is fully charged;
3. The battery indicator will be solid white when the battery is fully charged.

IMPORTANT: Pump will not operate while plugged into the electrical outlet.

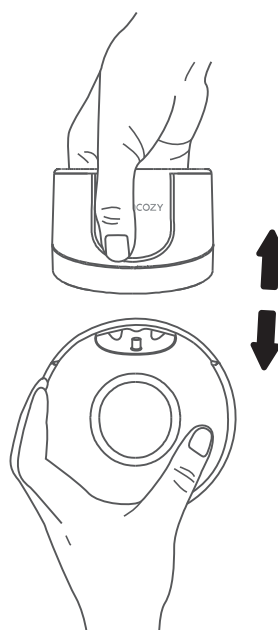
ONLY USE standard adaptor with USB Type-C cable for charging.

7. CLEANING, TRANSFER AND STORAGE

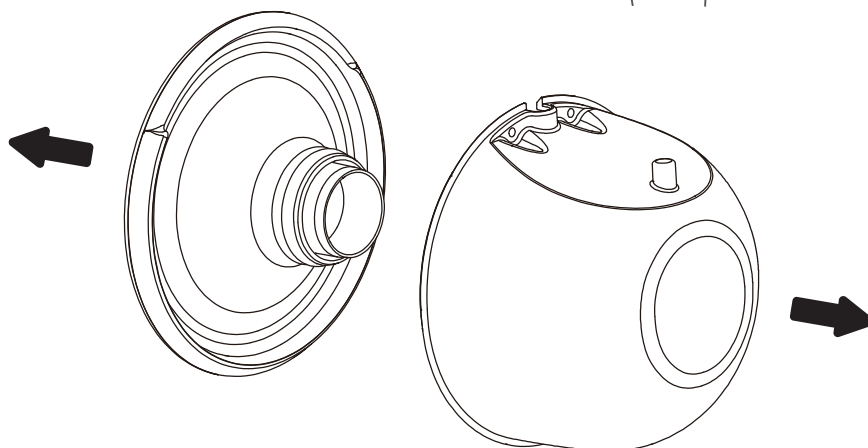
7.1 Cleaning

7.1.1 Disassemble

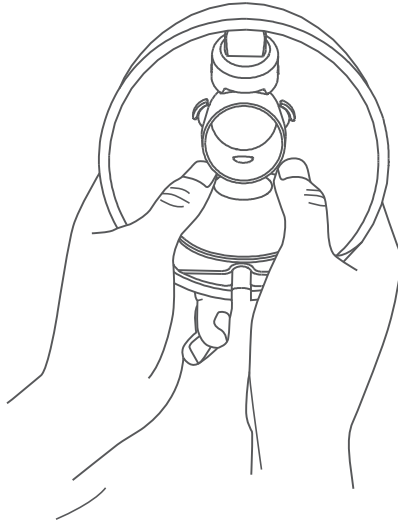
1. Separate pump motor from main body.



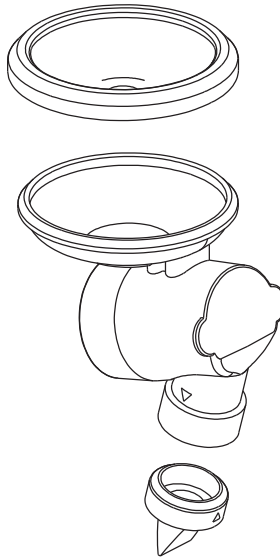
2. Detach flange from milk collector.



3. Separate linker from milk collector.



4. Disassemble the linker.



7.1.2 Cleaning

*For best sterilization, please clean and disinfect the pump before the first use.

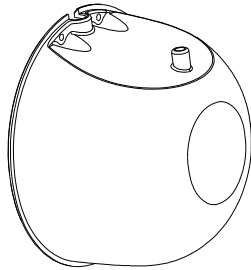
*It is a non-sterile product. Before cleaning and disinfection, please remove all accessories.

*Non-washable parts:

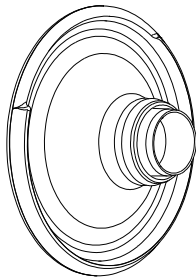


The pump motor contains electronics that should be kept dry. A clean, damp cloth can be used to clean the pump motor. Any other cleaning method will be classed as misuse under the warranty.

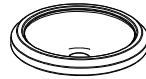
* Washable parts:



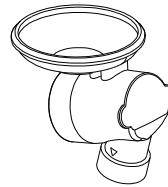
Milk Collector



Flange



Diaphragm



Linker



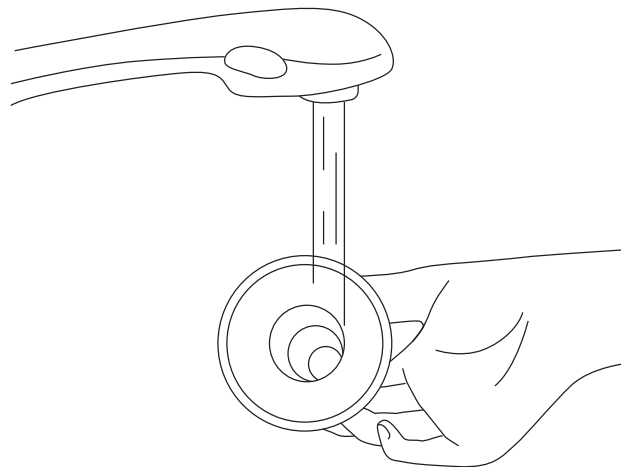
Valve

Supplies needed:

- Mild dish soap
- Clean dishcloth or soft brush
- Clean wash basin
- Clean water

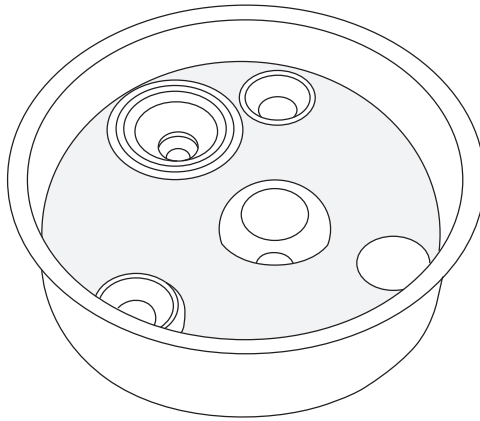
Warning: Breast pumps are personal care items intended for a single user only and should never be rented or shared. Separate and wash all parts that come in contact with breast and breast milk immediately after use to avoid breast milk residue and prevent bacteria growth.

1. Rinse all separated parts that come in contact with breast and breast milk in 25-30 °C (77-86 °F) water to remove breast milk residue.



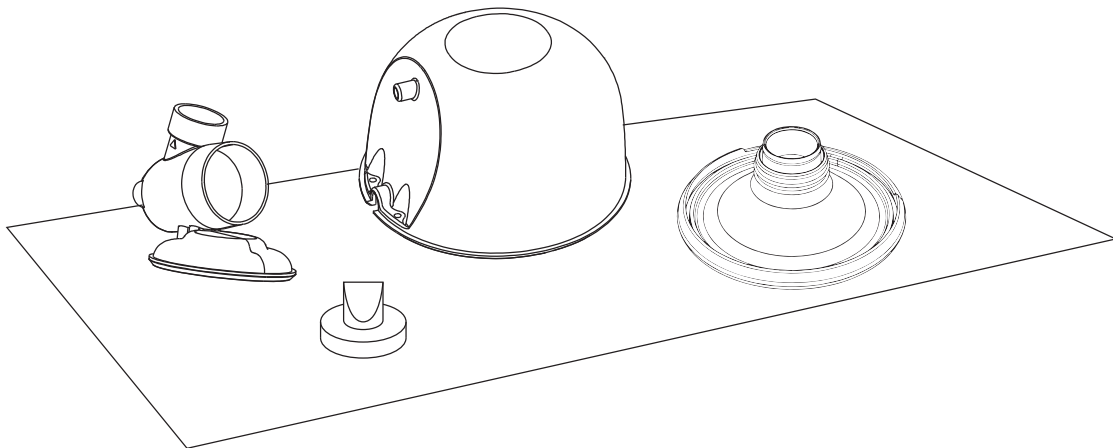
2. Once rinsed, parts that have touched the breast or breast milk should be placed in a clean wash basin used only for washing infant feeding equipment.

- Soak all washable parts in 40-60 °C (104-140 °F), soapy water for 3~5 minutes.
- Wash each part with a clean dishcloth or soft brush.
- Rinse all separated parts with clear water.



3. Place parts on a clean surface or towel.

- Allow all parts to air dry.
- Store dry parts in a clean, cool place when not in use.
- Do not store wet or damp parts.



Caution: Only use drinking-quality water for cleaning.

7.1.3 Sanitize

Sanitize – Before first use and once per day

*For best sterilization, please clean and disinfect the pump before the first use.

*Breast pump components that contact the breast and breast milk (flange, milk collector, linker, diaphragm, valve) can be hand-washed in the sink.

Precaution:

The pump body which houses the electrical components should be wiped down with a low-level disinfectant such as ethyl alcohol or isopropyl alcohol (70% - 90%).

Supplies needed:

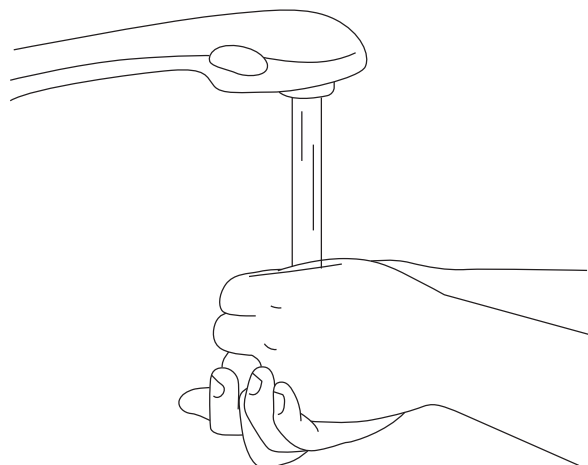
- Clean pot for 100 °C (212 °F) water
- Clean water
- Tongs

Washable part to wash:

- Flange
- Linker
- Diaphragm
- Valve

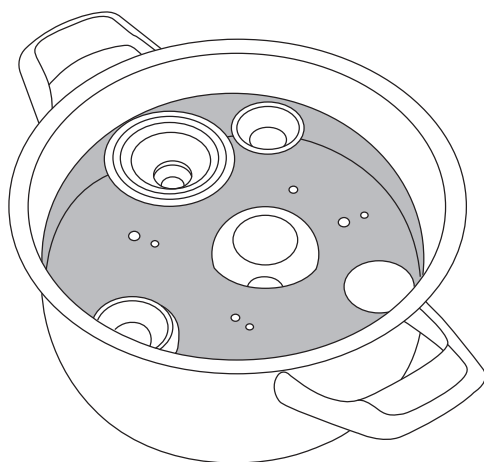
Warning: Breast pumps are personal care items intended for a single user only and should never be rented or shared. Separate and wash all parts that come in contact with breast and breast milk immediately after use to avoid breast milk residue and prevent bacteria growth.

1. Wash hands thoroughly.



2. Fill a pot with enough water to cover all parts.

- Bring water to a boil.
- Place parts in 100 °C (212 °F) water for 5-10 minutes.

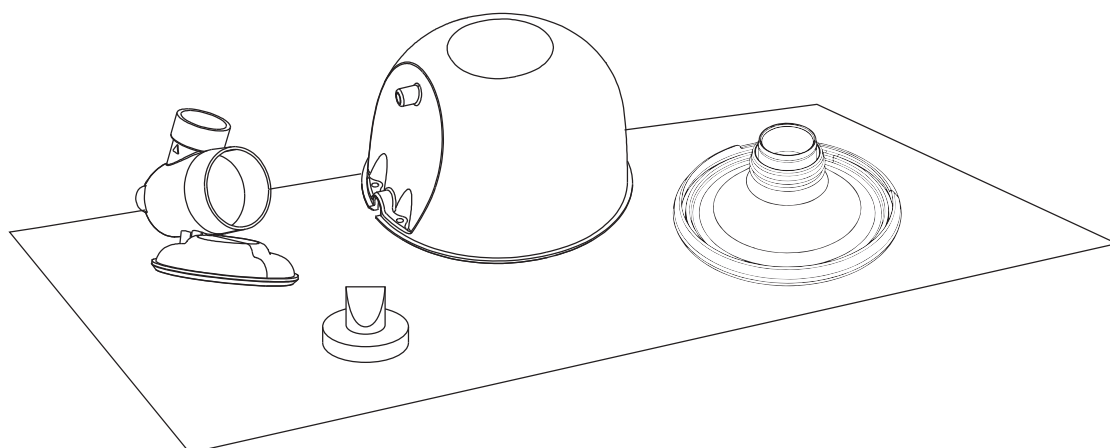


3. Allow water to cool and gently remove parts from water with tongs.



4. Place parts on a clean surface and / or towel.

- Allow all parts to air dry.
- Store dry parts in a clean, cool place when not in use.
- Do not store wet or damp parts.



7.2 Transfer

*When traveling, please use the charging cable provided and adjust it to the right power source for your current location. Before boarding the plane, please consult the airline for advice about carrying or using this pump on the plane first.

* Temperature: -20 to 60 °C / -4 to 140 °F

* Relative Humidity: 15% - 90%

* Ambient Pressure: 90 to 106kPa

7.3 Storage

7.3.1 Pump Storage

HOW TO STORE THE PUMP

* Temperature: -20 to 60 °C / -4 to 140 °F

* Relative Humidity: 15% to 90%

* Short-term storage

*Before the next breast pumping, please keep the pump away from direct sunlight, and ensure that the washable parts are dry and away from children. If the battery indicator flashes white, please charge the pump immediately.

* Long-term storage

First, please charge the pump before long-term storage in which way the service life of this pump can be prolonged. Second, keep it in a place away from direct sunlight in avoidance of discoloration. Third, clean and dry the washable parts before storing them.

When you want to reuse it again after a long term, please charge it first before reuse.

HOW TO STORE BREAST MILK

* These guidelines are only for healthy and full-term babies. If your baby is premature or suffering from sickness, please consult with your health care provider for other guidelines.

1. Use breast milk storage bags or clean, food-grade containers to store expressed breast milk. Make sure the containers are made of glass or plastic and have tight-fitting lids.
2. Remove air before sealing.
3. Lay bags flat to freeze. To prevent sticking between bags, please separate the bags with paper towels.



7.3.2 Milk Storage

Breast Milk Storage Guidelines

Type of Breast Milk	Storage Locations and Temperatures		
	Countertop 77 °F (25°C) or colder (room temperature)	Refrigerator 40 °F (4°C)	Freezer 23 °F (-5°C) or colder
Freshly Expressed or Pumped	Within 2-4 Hours	Within 24 Hours	Within 3 months
Thawed, previously frozen	Use within 2 hours after the baby is finished feeding		

These guidelines are for healthy full-term babies only and may vary for premature or sick babies. Check with your health care provider.

7.4 Disposal

DISPOSAL METHOD

*This pump contains a rechargeable lithium-ion battery. For disposal, please assort this pump to designated recycling stations for electrical equipment waste in your country.

*Proper disposal of this pump helps to protect natural resources, human health, and the environment.

*For more information about designated recycling stations, please contact the relevant departments in your area.

More information about disposal

* For more information about recycling points, please contact the relevant departments in your area.

8. TROUBLESHOOTING

Problems	Solutions
Pump does not work	<ul style="list-style-type: none"> •If let-down has not yet occurred, consider leaving the pump on breast for longer period of time to observe for possible delayed let-down. Note: Initial milk let-down time is unique for each person and varies by many factors. •Check nipple alignment, pause the pump, and remove it from breast. Realign the pump as described below. •You may not have the correct Flange size (Refer to Section 4. GETTING STARTED - Select Flange Size).
Milk does not flow	<ul style="list-style-type: none"> •Pause the pump and remove it from breast. Realign it correctly.(Refer to Section 5 - PUMPING - Alignment). •You may also separate the pump from the flange to realign (Refer to Section 7- CLEANING, TRANSFER AND STORAGE-DISASSEMBLE). Then, center your nipple in the flange tunnel and bring the pump to your breast (Refer to Section 5. PUMPING - Alignment).
Need to realign	<ul style="list-style-type: none"> •Pause the pump and remove it from breast. Realign it correctly. (Refer to Section 5 - PUMPING - Alignment). •You may also separate the Pump from the Flange to realign (Refer to Section 7- CLEANING, TRANSFER AND STORAGE-DISASSEMBLE).Then, center your nipple in the flange tunnel and bring the pump to your breast (Refer to Section 5. PUMPING - Alignment).
Feel discomfort while pumping	<ul style="list-style-type: none"> •If you're experiencing excessive discomfort, please try the following (Refer to Section 5. PUMPING - Alignment): •Make sure to press the Momcozy pump firmly against breast during Stimulation phase. •Tighten bra to make sure the Momcozy pump is held firmly against the breast. •Decrease suction strength. •Realign the Momcozy pump (see above). •You may be pumping for too long. Momcozy pump shuts off automatically after 30 minutes. •You may not have the correct flange size(Refer to Section 4. GETTING STARTED — Select Flange Size). Stop and see a medical professional or breastfeeding specialist.

Decreased (low) pump suction	<ul style="list-style-type: none"> •The Pump has 9 suction settings. Press the increase button to increase suction strength. •Check the condition of your washable parts. They should be replaced after three months of use. •If that does not work, try the following: <ol style="list-style-type: none"> 1. Check connections between all washable parts to ensure all are secure. 2. Visually inspect all washable parts and replace them if damaged. 3. Check that power is on. 4. Press the Pump securely against the breast.
Stop pumping	<ul style="list-style-type: none"> •Pump stops pumping automatically after 30 minutes. •Short press On / Off / Pause button will pause the pump, press again will resume.
Pump does not stop pumping	<ul style="list-style-type: none"> •Press the On / Off / Pause button. • If the issue persists, then break the seal by inserting a finger between the breast tissue and the flange. Then Press the On / Off / Pause button to turn the pump off.
Pump or Charger gets wet (immersed in water).	<ul style="list-style-type: none"> •Dry the pump off immediately. Prop Pump upright with charger port down and suction controls up, and let it air dry overnight. Do not use the pump or charger within 24 hours. •Contact Customer Care.
Pump is not charging.	<ul style="list-style-type: none"> •Ensure the USB Type-C cable with standard Charger (not included) is fully plugged into the pump charging port.

9. TECHNICAL SPECIFICATION

SPECIFICATIONS	
Pump Dimensions:	135mm X 108mm X 71mm
Pump Weight:	240g
Vacuum Range (Expression):	140mmHg-270mmHg
Charging Time:	90 minutes
Usage Time:	140 minutes



Rated Input:	5V==1A
--------------	--------

10. EMC GUIDANCE

Warning: Don't use near active HF surgical equipment and the RF shielded room of an ME system for magnetic resonance imaging, where the intensity of EM disturbances is high.

Warning: Use of this equipment adjacent to or stacked with other equipment should be avoided because it could result in improper operation. If such use is necessary, this equipment and the other equipment should be observed to verify that they are operating normally.

Warning: Use of accessories, transducers, and cables other than those specified or provided by the manufacturer of this equipment could result in increased electromagnetic emissions or decreased electromagnetic immunity of this equipment and result in improper operation.











Warning: Portable RF communications equipment (including peripherals such as antenna cables and external antennas) should be used no closer than 12 in (30 cm) to any part of the equipment, including cables specified by the manufacturer. Otherwise, degradation of the performance of this equipment could result.


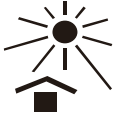









Guidance and Manufacturer's Declaration – Electromagnetic Emissions	
Emissions test	Compliance
RF emissions CISPR 11	Group 1
RF emissions CISPR 11	Class B
Harmonic emissions IEC 61000-3-2	Class A
Voltage fluctuations / flicker emissions IEC 61000-3-3	Complies

Guidance and Manufacturer's Declaration – Electromagnetic Immunity		
Immunity Test	IEC 60601-1-2 Test level	Compliance level
Electrostatic discharge (ESD) IEC 61000-4-2	± 8 kV contact ± 2 kV, ± 4 kV, ± 8 kV, ± 15 kV air	± 8 kV contact ± 2 kV, ± 4 kV, ± 8 kV, ± 15 kV air
Electrical fast transient / burst IEC 61000-4-4	± 2 kV for power supply lines ± 1 kV for input / output lines	± 2 kV for power supply lines ± 1 kV for input / output lines
Surge IEC 61000-4-5	± 0.5 kV, ± 1 kV line(s) to line(s) ± 0.5 kV, ± 1 kV, ± 2 kV line(s) to earth	± 0.5 kV, ± 1 kV line(s) to line(s) ± 0.5 kV, ± 1 kV, ± 2 kV line(s) to earth
Voltage dips, short interruptions and voltage variations on power supply input lines IEC 61000-4-11	0 % UT; 0.5 cycle at 0°, 45°, 90°, 135°, 180°, 225°, 270°, 315° 0 % UT ; 1 cycle 70 % UT; 25 / 30 cycle 0 % UT; 250 / 300 cycle	0 % UT; 0.5 cycle at 0°, 45°, 90°, 135°, 180°, 225°, 270°, 315° 0 % UT ; 1 cycle 70 % UT; 25 / 30 cycle 0 % UT; 250 / 300 cycle
Power frequency magnetic field IEC 61000-4-8	30 A/m 50Hz/60Hz	30 A/m 50Hz/60Hz
Conducted RF IEC 61000-4-6	3 V r.m.s. 150 kHz to 80 MHz 6 V RMS in the ISM and amateur bands between 0.15 MHz and 80 MHz	3 V r.m.s. 150 kHz to 80 MHz 6 V RMS in the ISM and amateur bands between 0.15 MHz and 80 MHz
Radiated RF IEC 61000-4-3	10 V/m 80 MHz – 2,7 GHz 80 % AM at 1 kHz	10 V/m 80 MHz – 2,7 GHz 80 % AM at 1 kHz
NOTE UT is the a.c. mains voltage prior to application of the test level.		

Guidance and Manufacturer's Declaration - IMMUNITY to proximity fields from RF wireless communications equipment					
Immunity test	IEC60601 test level				Compliance level
	Test frequency	Modulation	Maximum power	Immunity level	
Radiated RF IEC 61000-4-3	385 MHz	**Pulse Modulation: 18Hz	1.8W	27 V/m	27 V/m
	450 MHz	*FM+ 5Hz deviation: 1kHz sine	2W	28 V/m	28 V/m
	710 MHz 745 MHz 780 MHz	**Pulse Modulation: 217Hz	0.2W	9 V/m	9 V/m
	810 MHz 870 MHz 930 MHz	**Pulse Modulation: 18Hz	2W	28 V/m	28 V/m
	1720 MHz 1845 MHz 1970 MHz	**Pulse Modulation: 217Hz	2W	28 V/m	28 V/m
	2450 MHz	**Pulse Modulation: 217Hz	2W	28 V/m	28 V/m
	5240 MHz 5500 MHz 5785 MHz	**Pulse Modulation: 217Hz	0.2W	9 V/m	9 V/m
<p>Note* - As an alternative to FM modulation, 50 % pulse modulation at 18 Hz may be used because while it does not represent actual modulation, it would be worst case.</p> <p>Note** - The carrier shall be modulated using a 50 % duty cycle square wave signal.</p>					

11. GLOSSARY & SYMBOLS

Symbol	Explanation
	Indicates to follow the instructions for use.
	Indicates important information such as warnings and cautions.
	Indicates usage tips, additional information or a note.
	Indicates the manufacturer.
	Indicates the manufacturing date.
	Indicates that the part of the appliance that comes into physical contact with the user (also known as the applied part) is of type BF (Body Floating) according to IEC 60601-1. The applied part is the breast pump kit.
	Indicates manufacturer's catalog number of the breast pump.
	Indicates 'direct current'.
	Indicates the manufacturer's serial number of the medical device.
	Humidity Limitation

	Temperature Limit
	Indicates that the breast pump must be kept out of direct sunlight.
	Indicates that the breast pump must be kept dry.
	This symbol indicates do not dispose the device together with unsorted municipal waste (in accordance with local regulations).
	Indicates the compliance with the requirements of the Federal Communications Commission.
	Lot Number
 MEHRWEG	Recycling
IP22	Ingress Protection
	CE LOGO
	Atmospheric Limitation
	Consult instructions for use.
	Type BF Applied Part



Hong Kong Lute Technology Co., Limited
Room 02, 21/F, Hip Kwan Commercial Building, 38 Pitt
Street, Yau Ma Tei, Kowloon, Hongkong

US Importer:

Company: PACIFIC FORTUNE MANAGEMENT INC
Address: 145 E Duarte RD Suite AA 198 Arcadia CA 91006

support@momcozy.com

MADE IN CHINA

12. FCC COMPLIANCE

Any Changes or modifications not expressly approved by the party responsible for compliance could void the user's authority to operate the equipment.

This device complies with part 15 of the FCC Rules. Operation is subject to the following two conditions: (1) This device may not cause harmful interference, and (2) this device must accept any interference received, including interference that may cause undesired operation.

Note:

This equipment has been tested and found to comply with the limits for a Class B digital device, pursuant to part 15 of the FCC Rules. These limits are designed to provide reasonable protection against harmful interference in a residential installation. This equipment generates uses and can radiate radio frequency energy and, if not installed and used in accordance with the instructions, may cause harmful interference to radio communications. However, there is no guarantee that interference will not occur in a particular installation. If this equipment does cause harmful interference to radio or television reception, which can be determined by turning the equipment off and on, the user is encouraged to try to correct the interference by one or more of the following measures:

- Reorient or relocate the receiving antenna.
- Increase the separation between the equipment and receiver.
- Connect the equipment into an outlet on a circuit different from that to which the receiver is connected.
- Consult the dealer or an experienced radio / TV technician for help.